



**Eastern
Mediterranean
University**

"Virtue, Knowledge, Advancement"



◦ SPRING ◦

INFORMATION HANDBOOK

2018 - 2019



Contents

1	Welcome	5
1.1	Dear students.....	5
2	North Cyprus.....	6
2.1	The Hidden Secret.....	6
2.2	At a Glance.....	6
2.3	Places to Visit.....	6
3	Living in North Cyprus.....	7-8
3.1	Immigration Information (<i>Residence Permit</i>).....	7
3.2	Disciplinary Actions.....	7
3.3	Accommodation.....	8
3.4	Living Expenses.....	8
3.5	Transportation.....	8
3.6	Health and Activity Fund.....	8
4	Campus Events.....	9
4.1	Student Clubs.....	9
4.2	International Events.....	9
5	Student Services Office.....	10
5.1	Student Services Office.....	10
5.2	Campus Card.....	10
5.3	Crisis Management.....	10
5.4	Apostille Approval Procedures.....	10
5.5	Embassy Procedures For International Students.....	10
5.6	Call Center.....	10
5.7	Immigration Procedure (<i>Residence Permit</i>).....	10-11
6	Academics.....	12
6.1	Registration.....	12
6.2	Academic Advising.....	12

6.3	Class Attendance.....	12
6.4	Grade Calculation (CGPA - GPA).....	12
7	Facilities and Services.....	13-15
7.1	Identification Cards (Campus Cards).....	13
7.2	Health Center.....	13
7.3	Psychological Support.....	13
7.4	Alumni Communications and Career Research Directorate (MIKA).....	13
7.5	Canteens and Cafeterias.....	13
7.6	Bank Services.....	14
7.7	Registrar's Office.....	14
7.8	International Office.....	14
7.9	Social and Cultural Activities Unit.....	14
7.10	Library Programs.....	14
7.11	Post Office.....	14
7.12	Lala Mustafa Paşa Sports Complex.....	14
7.13	Off Campus Facilities.....	15
8	Programs.....	16-18
9	Academic Calendar 2018-2019.....	19
10	EMU Campus Map.....	20-21
11	Spring Dormitories Price List.....	22
12	Frequent Bus Services.....	23

This handbook is designed to orient you to Eastern Mediterranean University as you begin your journey here. It contains information on the academic, social, and personal development opportunities and the many resources available to you, in order to help you find what you need and to make the right choices for you.



Dear Student,

Having been admitted to the Eastern Mediterranean University, you have gained the right to receive privileged education. I congratulate you on your success and the correct choice you have made.

You will be offered privileged education with good career opportunities in EMU's international environment, thanks to this important choice of yours. Located on 3,000 acres of land, our university offers high quality study opportunities in a modern campus with an advanced infrastructure, internationally accredited programs, 1,100 faculty members from 35 countries and 20,000 students from 106 different countries. We take pride in ranking amongst the best universities in "Times Higher Education" World University Rankings as well as in appearing amongst the top best 150 Young Universities of the world.

As you are about to start this new period of your life in our university, we have prepared the attached information booklet which we believe would be useful for you. During the Orientation Days planned to take place between the 4th to 24th of February 2019, you will experience the pleasure of exploring both our campus and country through organized tours and sightseeing activities.

Whilst wishing you a successful academic life, I welcome you all to Eastern Mediterranean University and Cyprus...

Prof. Dr. Necdet OSAM
Rector

2.1 THE HIDDEN SECRET

North Cyprus is a natural paradise and a home to myriad legends that will fill you with wonder. It is the third largest island in the Mediterranean and has a special geographical location with its proximity to Europe, Asia and Africa. The beautiful landscape surrounded by turquoise waters under the fascinating blue sky will leave you mesmerized.

The exciting nightlife filled with entertainment and delights along with the friendly hospitality of the locals ensures a gracious welcome and an unforgettable experience. The endless adventures of the island are waiting to be discovered and you cannot afford to miss any of them, so get ready for an exciting experience!

2.2 AT A GLANCE

Official name: Turkish Republic of Northern Cyprus (TRNC)

Capital: Lefkoşa / Nicosia

President: Mustafa Akıncı

Official languages: Turkish

Geographical position: Middle East, eastern part of the Mediterranean Sea

Time zone: UTC +2 (in summer: UTC+3)

Official currency: Turkish Lira (TRY)

Seasons: Long dry summers and short, rainy winters

Average annual temperature: 19°C

Swimming season: April-October

Country Code: 0090

Area Code: 0392

2.3 PLACES TO VISIT

Lefkoşa (Nicosia)

The capital city of North Cyprus. The city has a unique administrative division: one side belongs to the Turkish Cypriots and the other to the Greek Cypriots. The last divided city in the world.

Girne (Kyrenia)

This city is located on the northern coast of Cyprus. Girne has a distinctive and unique flavor, beautiful mountain views and plenty of historical and architectural monuments.



Karpaz Peninsula (Karpas)

Located in the eastern part of the island, it is a place for nature lovers and secluded holiday. Clean sandy beaches merge with the turquoise Mediterranean Sea. Here you can enjoy a holiday close to nature, meet Cyprus's symbolic donkeys and visit the Turtle Beach.

Some historical places to visit

- Walled City of Famagusta
- Salamis Ruins with its Bath House, Gymnasium and Theatre
- Saint Barnabas Church
- Palm Beach
- Abbey of Bellapais
- Kyrenia Harbour
- Saint Hilarion Castle



3.1 IMMIGRATION INFORMATION (Residence Permit)

All students studying in TRNC are required by law to obtain a residence permit. There are penalties for those who fail to do so, and you may not be permitted to leave the island until you pay the penalty for staying on the island on an illegal status. Please remember that you are required to open a file within one month of your entry to the island. Otherwise you will need to pay the applicable penalty fee.

For the application process, please refer to page 11.

**For NEWLY registered students only*

For other details and fees please consult with the Student Services Office.

Tel: 0 392 630 2950/ 1111/ 1216/ 1217

Fax: 0 392 630 1317/ 1241

Email: registrar@emu.edu.tr

studentservices@emu.edu.tr

Website: registrar.emu.edu.tr

sso.emu.edu.tr

3.2 DISCIPLINARY ACTIONS

For those whose behaviours do not meet student and society's moral values inside or outside the campus, one of the following penalties will be applied by the EMU Student Disciplinary Committee depending on the type of offence.

- Warning
- Short-term suspension from the University (1-30 days)
- Medium and long term suspension from the University (31 days-1 semester)
- Dismissal from the University

Any act of cheating or any behaviour which has an effect on exam results, is deemed as a misdemeanour. Penalty for such behaviour is short-term suspension from the University. In the case of repeated misbehaviour, penalty increases exponentially.

The Grants or scholarships of students who receive a suspension penalty are terminated.

Families are informed about a student's misbehaviour outside of the campus. Students found guilty due to off-campus misbehaviour by Judicial court are referred to the EMU Student Disciplinary Committee where they may also be issued a penalty.

Penalties are not only announced on the University boards, but relevant families are also informed about the case. <http://mevzuat.emu.edu.tr/>

3.3 ACCOMMODATION

EMU has 18 on-campus dormitory complexes that can accommodate about 10,000 students. New students are given priority in placement. Students may also rent flats or rooms in private accommodation in Famagusta.

OUR DORMITORIES

1. EMU Sabanci
2. EMU 1
3. EMU 2
4. EMU 3
5. EMU 4

PRIVATE DORMITORIES

1. Alfam
2. Akdeniz
3. Marmara
4. Uğursal
5. Longson
6. Home Dorm
7. Ramen
8. Golden Plus
9. Kamacıoğlu
10. Novel Centrepont
11. Astra Plus
12. Pop Art Dorms
13. Nural Dorms

The International Office organizes a 1 night temporary placement for overseas students to selected dormitories and it is up to the student to decide during that duration which dormitory they would like to reside in, indefinitely.

<https://dormitories.emu.edu.tr/en>

3.4 LIVING EXPENSES

The cost of living in North Cyprus will depend on your standard of living, but in general it is around US \$ 300 – US \$ 500 per month (excluding tuition fees, textbooks and accommodation).

3.5 TRANSPORTATION

The university owned free shuttle services are available between the campus and city center. The route map is available at the back page of this handbook.

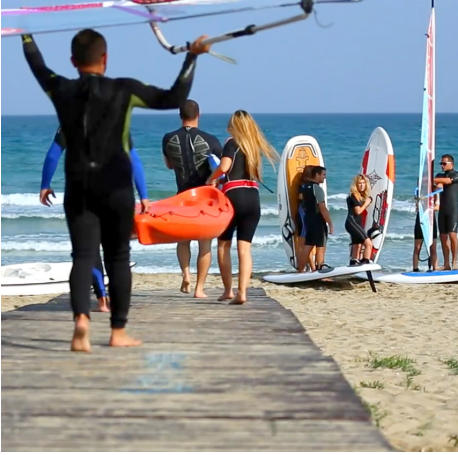


<https://transportation.emu.edu.tr/en>

3.6 HEALTH AND ACTIVITY FUND

An amount of \$135 is collected from all students at each registration. This fund allows students to access some medical service in the government hospital and to assist students in case of any emergency. The activity fund is used specifically for organizing student activities, cultural activities, trips, student meetings, seminars and much more.

<https://www.emu.edu.tr/healthcenter>



4.1 STUDENT CLUBS

The Social and Cultural Activities Unit has a mission of turning our students into active, creative, social and self-confident individuals. The Social and Cultural Activities Unit organizes concerts, conferences, trips, camps, various sports tournaments, exhibitions and festivals for all students.

Life at EMU is fun. Students have the opportunity to participate in a variety of extra-curricular activities and may join a wide range of social and cultural events in the university. Additionally, every year EMU organizes the 'International Night' as well as the 'International Spring Festival' which includes all kinds of social, cultural and sport activities.

<http://activity.emu.edu.tr/>



4.2 INTERNATIONAL STUDENT SOCIETIES AND EVENTS

The goal of the International Office is to assist new students with their transition into campus life and provide them with a network of International events to encourage academic and social exploration for as long as needed. Thus, the International Office helps societies create cultural events such as trips, celebrations and much more.

<https://io.emu.edu.tr/en>



5.1 STUDENT SERVICES OFFICE

Operating under the Registrar's Office, the Student Services Office works in coordination with other units responsible for life in campus and student related academic and social issues. The Student Services Office provides the services listed below:

- Immigration Procedures,
- Campus Card,
- Crisis Management,
- Diploma Approval Procedures,
- Apostille Approval Procedures,
- Embassy Procedures for International Students,
- Call Center.

5.2 CAMPUS CARD

- A campus card is automatically prepared for each student who completes his/her registration.
- Campus Cards shall be ready within a period of 14 days to a month following the registration of the students and should be personally collected from the Campus Card desk located in the Registrar's Office.
- Students with a broken or missing Campus Card should apply to the Student Services Office for the broken/missing card procedures.
- The ready Campus Cards shall be collected by the students within the specified dates from the Registrar's Office.
- Students must bring their Campus Cards to all exams.

5.3 CRISIS MANAGEMENT

Crisis Management is a cooperation system established for the students of Eastern Mediterranean University. It helps to bring students' possible health problems, injuries or daily issues under control. All the operations (public security, medical and moral assistance, loss assessment, information sharing between institutions, fast communication and intervention) are controlled by the Crisis Management center in the event of a crisis.

5.4 APOSTILLE APPROVAL PROCEDURES

Apostille procedures are required for graduate students who are to study/work in Europe or the United States. Apostille approval are done on behalf of students by the Student Services Office at the Registrars Office.

5.5 EMBASSY PROCEDURES FOR INTERNATIONAL STUDENTS

All international students graduating from EMU are expected to have their diplomas approved by their country's embassies in Ankara.

5.6 CALL CENTER

Eastern Mediterranean University Call Center provides services for the incoming calls in accordance with the requests and needs of the callers. EMU Call Center is here to provide help to students on all issues; (+90 392 630 11 11).

Please visit the Student Services Office website for more informaton

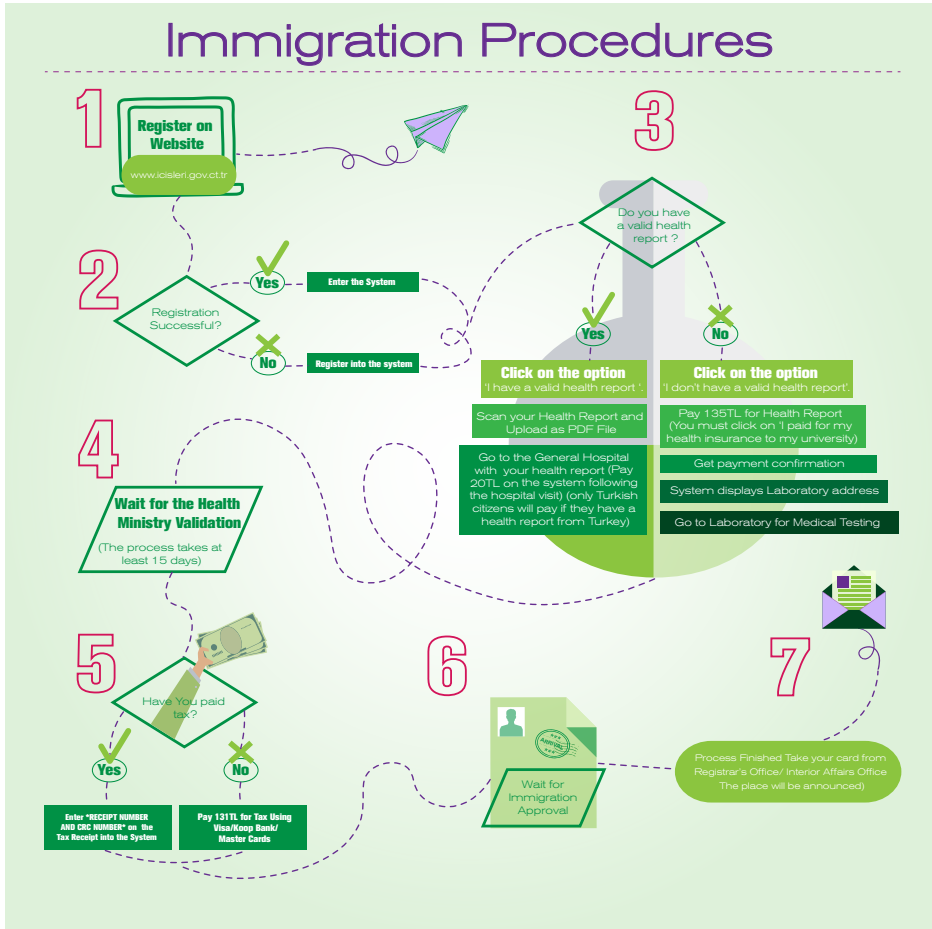
<https://registrar.emu.edu.tr/en/student-services-office>

5.7 IMMIGRATION PROCEDURES *(Residence Permit)*

Eastern Mediterranean University offers International Students an opportunity to complete their Immigration Procedures within the campus by bringing officers from District Governor's Office, Hospital and Tax Department together at the beginning of each academic semester.

IMMIGRATION PROCEDURE (Residence Permit)

In order to complete Immigration Procedures, it is mandatory to enter TRNC with a passport. Immigration procedures are completed online. Follow the steps listed below to complete the process:



IMPORTANT INFORMATION

For Online Immigration Procedures, please visit the Information Tent in front of the Registrar's Office.

Students who complete the registration procedures are required to complete the immigration procedures within the period of time provided upon their entry to TRNC.

Students who fail to complete the immigration procedures within the specified period of time will be subject to a daily penalty due to not holding a legal residence permit.

Students coming from third world countries are obliged to renew their health reports every year. Students coming from Turkey are obliged to renew their health reports every 2 years.

6.1 REGISTRATION

INTERNATIONAL STUDENTS

Conditions for Admission and Registration. The applicant must submit a certified copy of Higher Secondary School Certificate or Intermediate Certificate or the equivalent, demonstrating that s/he has satisfactorily graduated from secondary school, and must arrange for other relevant certified documents, such as transcripts or detailed mark sheets, to be released to EMU.

APPLICATION TO UNDERGRADUATE PROGRAMS

Applications to the undergraduate programs are accepted twice a year.

ACCEPTED HIGHER SCHOOL CERTIFICATES FOR UNDERGRADUATE PROGRAMS

High School Diploma, Higher Secondary School Certificate, General Certificates of Secondary Education (GCSE), Higher Secondary Certificate, Upper Secondary /Secondary School/ High School/ Senior High School Leaving Certificate, Testimonial, Secondary Education Certificate, Senior School Certificate, Matriculation Examination Certificate, SAT , WAEC , WASSCE , NECO , JAMB, BACCALAUREATE.

ADMISSION REQUIREMENTS TO GRADUATE PROGRAMS

- Applications to the graduate programs at EMU can be made throughout the year, until one month prior to the beginning of each semester.
- Applicants are advised to make their applications by the end of December or August for Spring and Fall semesters respectively. Application deadlines are announced on the web site of the Institute and that of the Registrar's Office. Prospective applicants are required to apply online.

<https://grad.emu.edu.tr/en/admission>



6.2 ACADEMIC ADVISING

The aim of the Student Advisorship at Eastern Mediterranean University is to help students in solving the problems they may encounter primarily in academic areas, to provide guidance, to assist them in their chosen profession, to inform them about the facilities of the university and faculty/school, to monitor their academic performance and success, in case of failure, to provide relevant assistance and to help in course selection. Academic advisors are faculty members who are appointed by the relevant Department Heads or Directors and announced on department boards.

<http://mevzuat.emu.edu.tr>

6.3 CLASS ATTENDANCE

Students are responsible for attending the lessons, laboratory hours and workshops, all the exams that take place within the semester and all other projects/applications to fulfil program requirements. A student who fails to attend 20% or more of a course or its applications without any excuse, fails the course and receives a Nil Grade (NG). Nil Grade: The student is accepted as being unsuccessful due to not attending the course.

<http://mevzuat.emu.edu.tr>

6.4 GRADE CALCULATION (CGPA - GPA)

A student's academic achievement for each term is expressed numerically by an index referred to as the 'Grade Point Average' - GPA. The GPA is the weighted average of course grades. When calculating the course grade, mid-term exam(s), the final exam, lab/workshop reports and/or exams (if applicable), tests, projects, and/or homework are taken into consideration. The CGPA is the cumulative average of all courses taken during all semesters.

<http://mevzuat.emu.edu.tr>





7.1 IDENTIFICATION CARDS (CAMPUS CARDS)

An ID card is issued to each undergraduate and graduate student. The card is a debit card and can be used for payment in any shop. An ID card can be asked to be presented in order to enter some event or to attend some activities. Additionally, the card may be credited with units which can be debited for payments.

<http://mevzuat.emu.edu.tr>

7.2 HEALTH CENTER

Specialists provide free health services both to students and staff members in 7 different areas, namely internal medicine, dermatology, dentistry, E.N.T, gynaecology, psychiatry, urology and ophthalmology. In addition to these services, the center provides first aid and short-term bed-services.

www.emu.edu.tr/healthcenter



7.3 PSYCHOLOGICAL SUPPORT

EMU-PDRAM's services are available for those times when you need someone to talk to, sort a situation out, or review what is not working well in your life. EMU-PDRAM strictly observes confidentiality as its guiding principle. If a student is at risk of harm to self or others, confidentiality may be broken for safety purposes.

<https://pDRAM.emu.edu.tr/en>



7.4 ALUMNI COMMUNICATIONS AND CAREER RESEARCH DIRECTORATE (MIKA)

MIKA offers career consultancy services for students both during their study period and following their graduation. In this respect, seminars, workshops and training programs aiming for a sustainable career are frequently organized by the Directorate.

<https://alumni.emu.edu.tr/en>



7.5 CANTEENS AND CAFETERIAS

About 35 cafeterias and canteens on EMU campus provide students with clean, good-quality food services at reasonable prices. There is one table d'hôte restaurant on the campus which serves healthy meals at a affordable price. All meals are prepared in accordance with the daily calorie needs of the students.

<https://cafeterias.emu.edu.tr/en>

7.6 BANK SERVICES

On the EMU campus, there are two branches of Koop Bank and a number of ATMs belonging to different banks where foreign Visa or Master Cards can be used to withdraw money.

<http://www.koopbank.com>

7.7 REGISTRAR'S OFFICE

The Registrar's office deals with any kind of student-related issue such as official documents, transcripts, leave of absence (freezing registration), and graduation documents etc. Additionally, the unit guides students in dealing with the procedures at the Turkish Embassy in Nicosia.

<https://registrar.emu.edu.tr/en>

7.8 INTERNATIONAL OFFICE

The office is dedicated not only to looking after the welfare of our international students but also making sure that they are provided with a full range of social and cultural activities. The office takes full advantage of EMU outstanding facilities, including the new Cultural and Conference Center, and the private Beach Club to offer students an experience they will never forget. They also collaborate with partners all around the world, enabling EMU to offer a fast growing Student Exchange Program, and runs a full program of internationally accredited short courses in the EMU International Summer School. Every year, representatives of Students Societies are elected and these students collaborate with the International Office to help and assist members of their societies during their studies at EMU.

<http://io.emu.edu.tr/en>, facebook.com/ioemu,

<https://studentexchange.emu.edu.tr/en>

twitter.com/io_emu, instagram.com/io_emu

7.9 SOCIAL & CULTURAL ACTIVITIES UNIT

Students can contact the unit in order to join or form a new club. After one year of an active membership in any club, students can apply for being a candidate in the executive board of the relevant club. Club members also benefit from the facilities provided to them on behalf of the Social and Cultural Activities Directorate. Students who would like to join a club can fill a form available on the EMU website.

<http://activity.emu.edu.tr>

7.10 LIBRARY

The library views continuous development as an absolute necessity. It encourages scientific research and information literacy at the university and provides support for activities in these areas and also fulfils an important function through compiling EMU publications, offering this archive to its readers, and promoting it worldwide. During the exam period, the library works 24 hours a day and provides comfortable and conducive areas to study alone or in groups. Books can be borrowed for up to 1 month depending on the academic level. The library has over 150,000 printed books as well as thousands of e-books and online journals available to all through online access.

<http://library.emu.edu.tr>

7.11 POST OFFICE

The university's Post Office is located at Sabanci Dormitory, Ground Floor. The Post Office is responsible for the organization, operation and provision of postal services, the safe and fast handling and delivery of postal items. Students can send/ receive parcels to/ from any part of the world.

7.12 LALA MUSTAFA PAŞA SPORTS COMPLEX

With a capacity of 3500 seats, the LMP Sports Complex boasts 3 SQUASH halls, a JUI-JITSU studio, tartan track and a football pitch, all providing sports services at international standards. It has a mission of spreading sports activities nationwide. This directorate takes part in national leagues in the fields of volleyball, basketball, athletics, tennis, handball, billiards, chess, wrestling, cycling, table tennis, triathlon, football and tennis. Students representing the university in the leagues are awarded scholarships by the university. Last but not least, the cricket, bowling, darts, swimming, futsal and football teams successfully represent the University in the inter-university tournaments and leagues. The Sports Complex is accessible to all students.

<https://spor.emu.edu.tr/en>

7.13 Off Campus Facilities

EMU Beach Club



EMU Beach Club



It is used throughout the year for beach and pool parties and as a place of relaxation for both staff and students. A full restaurant service is available, and with a large swimming pool and family facilities, students are able to take full advantage of the Mediterranean climate in an exclusive high-class setting.

<https://ww1.emu.edu.tr/en/campus/international-office/beach-club/1256>

Rauf Raif Denktaş Culture and Congress Center



Rauf Raif Denktaş Culture and Congress Center houses convention and conference rooms, exhibition halls, museums, art workshops plus more.

*These off campus facilities are where most of EMU's cultural activities, conferences, workshops and seminars take place throughout the year. EMU's bus line number 3 goes to both of these destinations, for the bus schedule please refer to page 23 of this booklet.

<https://ww1.emu.edu.tr/congresscenter>



Dear Students,

Welcome to Eastern Mediterranean University!

The 21st Orientation Days which is targeted towards new students joining the EMU Family every year, will be held between the **4th and 24th of February 2019**. Please feel free to contact the Help Desks on campus if you require any further information during the Orientation period.

Please find the detailed program below.

Best regards,

International Office

PROGRAM/SEMINAR

4 - 24 February 2019	Welcoming and Placement
11 - 13 February 2019	English Preparatory School Placement Test For prep school transportation, please follow the ring service (see page 23)
22 February 2019	Famagusta Tour Time: 10:00
23 February 2019	Nicosia and Kyrenia Tour Time: 08:30 - 17:00
24 February 2019	Karpaz Tour Time: 08:30-17:00
18 February 2019	Classes Commence



22 February 2019

Welcoming Night/Party

Time: 19:30

Venue: Lala Mustafa Paşa (LMP) Sports Complex

- DJ Music, Cultural Dances
- Singing Competition, Slide shows and more...

Family members of students are also welcome.

* All tours will depart from the International Office and will finish at the same venue.

For further information:

Tel: 0 392 630 2089 - 2689 - 2444

Fax: 0 392 630 1249 - 3040

E-mail: io@emu.edu.tr

Important Telephone Numbers

- Eastern Mediterranean University (Emergency).....0 533 842 96 00
0 533 820 81 81
- Security Office.....0 392 630 14 44
- Dormitories.....0 392 630 13 28
- Registrar's Office.....0 392 630 12 17
- Health Center.....0 392 630 22 00
- International Office.....0 392 630 24 44
- Student Services Office.....0 392 630 29 50

You can find Help Desks located at the following places:

- EMU-2 Dormitory
- Registrar's Office
- English Preparatory School
- International Office



TOUR PROGRAM/SEMINAR

Friday, 22nd February

FAMAGUSTA TOUR

- 10:00 Departure from the International Office
- 10:15 Visit to Othello Castle
- 10:45 Departure from Othello Castle and walk to Lala Mustafa Pasha Mosque, Namik Kemal Dungeon, Old City and free time
- 13:00 Departure to City Mall
- 16:00 Arrival at EMU, end of tour

At some point of the tour: Financial Affairs Seminar. To be held by EMU Accounting Office

Saturday, 23rd February

NICOSIA & KYRENIA TOUR

- 08:30 Departure from the International Office
- 09:30 Arrival at Bellapais Monastery
- 10:30 Arrival at Kyrenia Castle
- 11:30 Lunch and free time at Kyrenia Harbour
- 13:30 Departure for Nicosia
- 14:30 Visit to Selimiye Mosque, Great Inn, Bandabulya (Bazaar), Yiğitler Burcu and Ledra Palace
- 16:00 Departure from Nicosia to EMU
- 17:00 Arrival at EMU, end of tour

At some point of the tour: Student Affairs Seminar. To be held by Vice Rector of the Student Affairs Office

Sunday, 24th February

KARPAZ TOUR

- 08:30 Departure from the Social and Cultural Activities Directorate
 - 09:00 Short break at Lemar in Boğaz, Iskele
 - 09:30 Departure for Dipkarpaz village
 - 11:00 Short coffee break in Dipkarpaz village (where Greeks and Turks live together)
 - 12:00 Departure for Apostolos Andreas Monastery
 - 12:30 Visit to Apostolos Andreas Monastery
 - 15:00 Departure from Monastery to EMU
 - 17:00 Arrival at EMU, end of tour
-

Tuesday, 26th February

Life in North Cyprus Seminar. To be held by Police General Directorate
Time: 14:00

NOTE

All Tour Departures: In front of the International Office

Tour Registration: <http://io.emu.edu.tr/en>

For any change/update: <http://io.emu.edu.tr/en>

All Seminars will be held at Central Lecture Hall (CL)

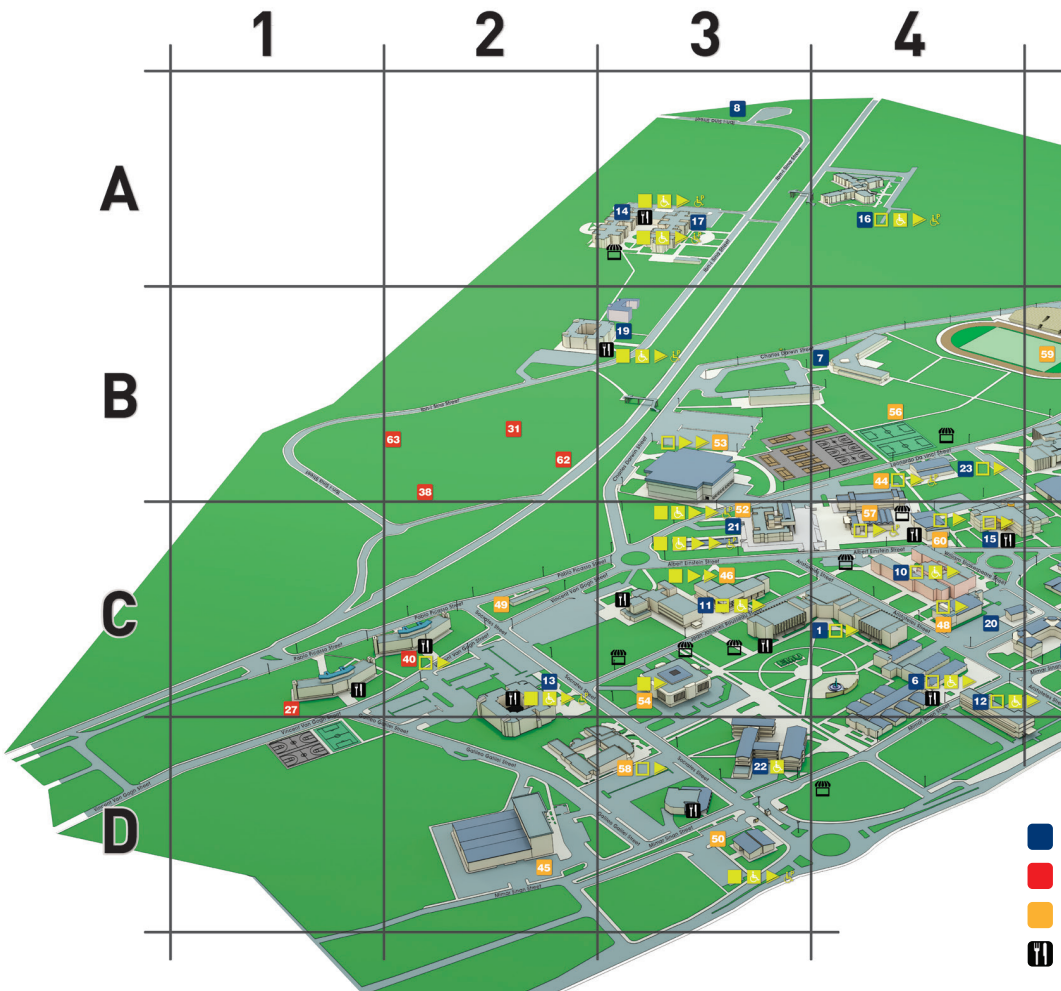
Academic Calendar 2018-19

SPRING Semester

February	01-04		Resit Examinations
February	06	2019	Last Day For The Submission of Resit Examination Grades To The Registrar
February	04-24	2019	Orientation Days For New Students
February	11	2019	Last Day For Changing Fall Term 'Incomplete' Grades . English Proficiency Test ; 1st Stage (Placement Test)
February	12	2019	English Proficiency Test ; 2nd Stage (Listening, Reading, Writing)
February	13	2019	Last Day For Online Registration . English Proficiency Test ; 2nd Stage (Speaking)
February	14-15		Course Registration Period (With Advisor)
February	18	2019	Classes Commence. 1st Day Of Late Registration (With Penalty)
February	25	2019	Last Day For Late Registration Last Day For Submission of Grade Change To The Registrar Last Day For Submission of Graduation Make-Up Grades To The Registrar
February	26	2019	Last Day For Submission Of Graduation Make-Up and Resit Exams Graduation Decisions To The Registrar
February	28	2019	Graduation for Fall Graduation Make-Up and Resit Exams Graduates
March	04	2019	Last Day For Add / Drop
April	11-22	2019	Mid – Term Exams Period
April	15	2019	System Will Be Accessible For Entering Courses To Be Offered In Summer 2018-19
April	23	2019	National Sovereignty & Children's Day
May	01	2019	Workers' and Spring Day
May	03	2019	Last Day For Entering Courses To Be Offered In Summer 2018-19
May	10	2019	Last Day For Course Withdrawal Last Day For Applying To Get Leave of Absence
May	13	2019	Online Course Registration For Summer 2018-19 Commences
May	15-18	2019	Spring Fest
May	19	2019	Atatürk Commemoration, Youth and Sports Day
May	31	2019	Last Day Of Classes
June	04	2019	Ramadan Bairam Eve
June	05-07	2019	Ramadan Bairam
June	10-22	2019	Final Exams
June	26	2019	Last Day For The Submission of Grades To The Registrar
June	27	2019	Last Day For Submission Of The Graduation Decisions To The Registrar
June	28-30	2019	Online Application Period For Resit Examinations
July	02	2019	Graduation Ceremony for Spring Graduates

SUMMER Semester

July	03-09	2019	Resit Examinations
July	11	2019	Last Day For The Submission of Resit Examination Grades To The Registrar
July	15	2019	Last Day For Changing Spring Term 'Incomplete' Grades
July	17	2019	Last Day For Submission of Graduation Make-Up Grades To The Registrar
July	17	2019	System will be Accessible for Entering Courses to be Offered in Fall 2019-2020 Last Day for online Registration
July	18-19	2019	Course Registration Period (With Advisor)
July	19	2019	Last Day For Submission Of Graduation Make-Up and Resit Exams Graduation Decisions To The Registrar
July	20	2019	Peace and Freedom Day
July	22	2019	Classes Commence
July	23	2019	Graduation for Spring Graduation Make-Up and Resit Exams Graduates
July	24	2019	Last Day for Late Registration
July	26	2019	Last Day For Entering Courses to be Offered in Fall 2019-2020
July	29	2019	Last Day Add/Drop
August	01	2019	National Holiday
August	06	2019	Online Course Registration for Fall Term 2019-2020
August	10	2019	Kurban Bairam Eve
August	11-14	2019	Kurban Bairam



- 1** Central Lecture Halls | C4
- 2** Department of Civil Engineering | C5
- 3** Department of Computer Engineering | B6
- 4** Department of Electrical & Electronic Engineering | B5
- 5** Department of Industrial Engineering | B5
- 6** Department of Mechanical Engineering | C4
- 7** Eastern Mediterranean Doğa College | B4
- 8** Eastern Mediterranean Doğa Primary Sch. | A3
- 9** Faculty of Architecture | C5
- 10** Faculty of Arts & Sciences | C4
- 11** Faculty of Business & Econ.- Sch. of Business & Finance | C3
- 12** Faculty of Communication & Media Studies | C4
- 13** Faculty of Education | C2
- 14** Faculty of Health Sciences - Sch. of Health Services | A3
- 15** Faculty of Law - School of Justice | C4
- 16** Faculty of Medicine | A4
- 17** Faculty of Pharmacy | A3
- 18** Faculty of Tourism | C5
- 19** Foreign Language & English Preparatory School and Annex | B3
- 20** Institute of Graduate Studies & Research | C4

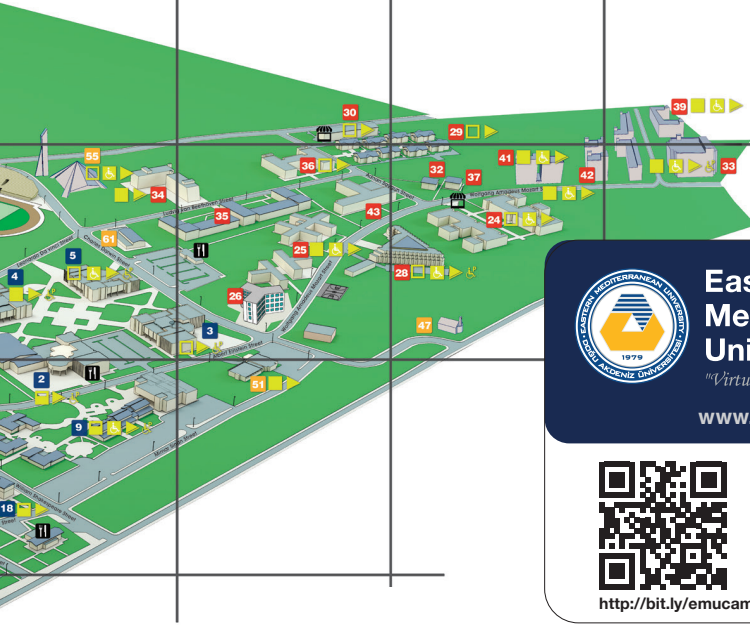
- 21** Rector's Office | C3
- 22** School of Computing & Technology | D3
- 23** Visual Arts & Vis. Com. Design - Techno Park | B4
- 24** Akdeniz Dormitory | B7
- 25** Alfam Dormitory | B6
- 26** Alfam Vista Dormitory | B6
- 27** EMU 1 Dormitory | C1
- 28** EMU 2 Dormitory - EMU Dorm. Directorate Office | B7
- 29** EMU 3 Dormitory | A7
- 30** EMU 4 Dormitory | A6
- 31** Golden Plus Dormitory | B2
- 32** Halide Edip Guest House - I | B7
- 33** Home Dorm | B8
- 34** Kamacıoğlu Dormitory | B5
- 35** Longson Dormitory | B6
- 36** Marmara Dormitory | B6
- 37** Namık Kemal Guest House - II | B7
- 38** Nural Dormitory | B2
- 39** Ramen Dormitory | A8
- 40** Sabancı Dormitory | C2

5

6

7

8



**Eastern
Mediterranean
University**

"Virtue, Knowledge, Advancement"

www.emu.edu.tr



MAP

<http://bit.ly/emucampusmap>

Academic



Kiosk

Dormitory



Post Office

Administrative



Cashomat

Food Facilities



Bank

WHEELCHAIR ACCESS INFORMATION

Full access to all floors

Mostly Accessible

Ground floor only

Toilets accessible to wheelchair uses within building

Entrance suitable for wheelchair access

Entrance with ramp

Slope over 10%

Car parking space for disabled drivers

- 41** T.C. Yurtkur Necmettin Erbakan Dormitory Block 1 | B7
- 42** T.C. Yurtkur Necmettin Erbakan Dormitory Block 2 | B7
- 43** Uğursal Dormitory | B6
- 44** Accounting Affairs & Personnel Affairs Office | B4
- 45** Administrative Facilities | D2
- 46** Alumni Comm. & Career Development Office | C3
- 47** Church | B7
- 48** Computer Center | C4
- 49** Continuing Education Center - EMU Coop Ltd. | C2
- 50** DAÜ-TV & Radio | D3
- 51** Health Center - Psy. Counselling Guid. & Res. Center | C6
- 52** International Office | C3
- 53** Lala Mustafa Paşa Sports Complex | B3
- 54** Library | C3
- 55** Mosque | B5
- 56** Open Air Sports Facilities | B4
- 57** Registrar's Office | C4
- 58** Social & Cultural Activities Center | D3
- 59** Stadium | B5
- 60** Table d'hote Restaurant | C4

- 61** Technical Affairs | B5
- 62** Astra Plus Dormitory | B2
- 63** Pop Art Dormitory | B2
- 64** Novel Centrepont Dormitory | D3

Fall Dormitories Price List

EMU CAMPUS 2018/2019 SPRING SEMESTER DORMITORY FEES (PER PERSON)

EMU Dormitories

Name of the Dormitory	Female / Male Dormitory	Room Type	Room Area m ²	WC / Shower	Free Internet Speed (mbps)	Semester Fee in Turkish Lira (TL)	
						Upfront (tl)	Instalments (tl)
SABANCI	Female	Triple	15	in corridors	100 mbps	2.420	TL 2.600
EMU 1	Male	Triple	15	in corridors	100 mbps	TL 2.420	TL 2.600
	Male	Quadruple studio	28	in room	100 mbps	TL 2.900	TL 3.120
EMU 2	Male	Special double	20	in room	100 mbps	TL 3.480	TL 3.760
	Male	Double	27	shared	100 mbps	TL 3.200	TL 3.460
	Male	Triple	27	shared	100 mbps	TL 2.530	TL 2.720
EMU 3	Female/Male Blocks	Corner Single	10	shared	100 mbps	TL 4.950	TL 5.340
	Female/Male Blocks	Standard Double	12	shared	100 mbps	TL 2.970	TL 3.200
	Female/Male Blocks	Corner Double	10	shared	100 mbps	TL 2.750	TL 2.960
EMU 4	Female	Quadruple	30	in room	100 mbps	TL 2.250	TL 2.400

B.O.T. Dormitories (Private Dorms)

Name of the Dormitory	Room Type	Room Area m ²	Semester fee (USD)	Deposit(\$)	Free Internet Speed (Mbps)	Kitchen	Cafeteria	Campus Location
ALFAM	Single	13	\$1,500	-	4 mbps	in corridors	-	North
	Double	18	\$ 950	-	4 mbps	in corridors	-	North
	Vista Double	30	\$ 1,650	-	4 mbps	in room	✓	North
UĞURSAL	Single	25	\$ 1,800	\$ 100	100 mbps	in corridors	✓	North
	Double	25	\$ 1,050	\$ 100	100 mbps	in corridors	✓	North
MARMARA	Single	28	\$ 1,800	-	100 mbps	in room	✓	North
	Double	28	\$ 1,000	-	100 mbps	in room	✓	North
AKDENİZ	Single	24	\$ 1,700	\$ 150	100 mbps	in corridors	-	North
	Double	24	\$ 1,000	\$ 150	100 mbps	in corridors	-	North
HOMEDORM	Single	24	\$ 1,800	-	2 mbps	in corridors	✓	North
	Double	24	\$ 1,000	-	2 mbps	in corridors	✓	North
RAMEN	Single	24	\$ 2,400	\$ 150	100 mbps	in room	✓	North
	Double	24	\$ 1,200	\$ 150	100 mbps	in room	✓	North
GOLDEN PLUS	Single	24	\$ 2,350	\$ 150	100 mbps	in room	✓	South
	Double	32	\$ 1,300	\$ 150	100 mbps	in room	✓	South
ASTRA PLUS	Single	17	\$ 2,200	-	100 mbps	in room	✓	South
	Double	29	\$ 1,300	-	100 mbps	in room	✓	South
POPART	Single	32	\$ 3,200	-	5 mbps	in room	✓	South
	Double	38	\$ 1,700	-	5 mbps	in room	✓	South
NOVEL CENTREPOINT	Single	26	\$ 3,250	\$ 200	100 mbps	in room	✓	North
	Double	36	\$ 1,725	\$ 200	100 mbps	in room	✓	North
KAMACIOĞLU <i>(private dormitory)</i>	Single	22	\$ 2,000	\$ 100	100 mbps	in corridors	✓	North
	Double	22	\$ 1,000	\$ 100	100 mbps	in corridors	✓	North
NURAL	1+1 Suite	38	\$ 4,890	-	100 mbps	in room	✓	South
	Single	28	\$ 2,790	-	100 mbps	in room	✓	South
	Double	38	\$ 1,697	-	100 mbps	in room	✓	South
LONGSON	Single	-	\$ 2,000	-	-	in corridors	✓	North
	Double	-	\$ 1,000	-	-	in corridors	✓	North

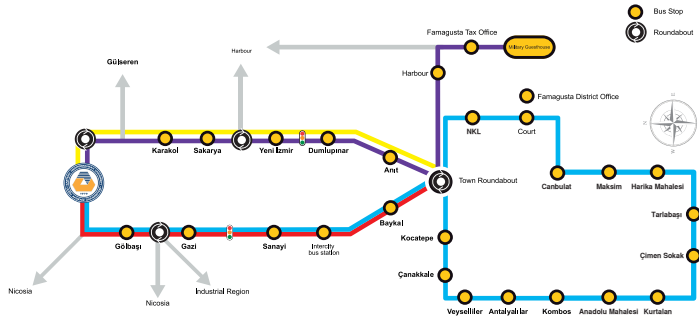
*THE FEES ARE FOR ACADEMIC YEAR AND DO NOT INCLUDE SUMMER SCHOOL.

*SOME OF THE DORMS OFFER INSTALLMENT FEES.



BUS SERVICES

Campus - City Bus Service Routes



Service Line

To EMU

Line 1 Salamis	
Weekdays	Week-Holidays
07:30	10:00
09:00	12:00
10:00	16:00
12:00	21:00
14:00	
16:00	
17:00	
19:00	
21:00	

Line 2 Varosha	
Weekdays	Week-Holidays
07:40	07:50
10:00	10:00
12:00	14:20
14:00	16:20
17:00	19:00
19:00	21:00

Line 4 Military Gunterhouse	
Weekdays	Week-Holidays
07:30	07:30
10:00	12:00
12:00	12:00
14:00	16:00
17:00	23:00
19:00	23:00
21:00	23:00

Line 5 Nicosia Road	
Weekdays	Week-Holidays
08:00	08:00
10:00	10:00
12:00	14:00
16:00	16:00
17:00	17:00

From EMU

Line 1 Salamis	
Weekdays	Week-Holidays
08:40	09:40
09:40	12:00
11:40	16:00
13:40	21:00
15:40	
16:40	
18:40	
20:40	

Line 2 Varosha	
Weekdays	Week-Holidays
09:40	09:40
11:40	14:00
12:40	18:00
15:40	
16:40	
18:40	
20:40	

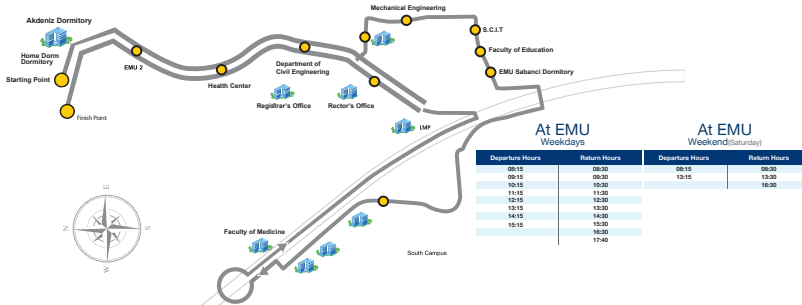
Line 4 Military Gunterhouse	
Weekdays	Week-Holidays
09:40	09:40
11:40	12:00
13:40	16:00
15:40	21:00
18:40	23:00
20:40	23:40

Line 5 Nicosia Road	
Weekdays	Week-Holidays
09:40	08:40
11:40	13:40
15:40	16:40

IMPORTANT NOTES

*WEEKEND SERVICE (SUNDAY) SCHEDULE IS APPLIED ON OFFICIAL HOLIDAYS
*PLEASE BE INFORMED THAT DEPENDING ON THE DEMAND FROM STUDENTS, THE FREQUENCY OF BUS SERVICES WILL BE INCREASED OR DECREASED. RELEVANT CHANGES WILL BE ANNOUNCED AT THE TRANSPORTATION UNIT WEBSITE.

Campus Ring Service Route



At EMU Weekdays		At EMU Weekend(Saturday)	
Departure Hours	Return Hours	Departure Hours	Return Hours
08:15	08:30	08:15	08:30
09:15	09:30	12:15	12:30
10:15	10:30		
11:15	11:30		
12:15	12:30		
13:15	13:30		
14:15	14:30		
15:15	15:30		
16:15	16:30		
	17:40		

Due to the 2018-2019 Academic Year January break taking place between 17 January and 17 February 2019, bus services for lines 1, 2, 4 and campus ring services will be operating as follows.
Best regards,
Transportation Section

At EMU	
Campus Ring Service	
Departure Hours:	Return Hours:
06:15	08:30
10:15	10:30
12:15	12:30
14:15	14:30
16:15	16:30

To EMU							
Line 1 Salamis	Line 2 Varosha	Line 4 Guest House	Line 5 Nicosia Road				
Weekdays	Weekends/Holidays	Weekdays	Weekends/Holidays	Weekdays			
08:00	17:00	08:00	11:20	08:00	11:20	19:00	17:00
11:00	22:00	11:00	15:00	11:00	15:00	22:00	22:00
13:00		13:00	19:00	17:00	19:00		
15:00		15:00					
19:00		19:00					
22:00		22:00					

From EMU							
Line 1 Salamis	Line 2 Varosha	Line 4 Guest House	Line 5 Nicosia Road				
Weekdays	Weekends/Holidays	Weekdays	Weekends/Holidays	Weekdays			
10:40	12:40	10:40	12:40	11:00	13:40	16:40	16:40
12:40	21:40	12:40	14:40	16:40	14:40	21:40	21:40
14:40		14:40	18:40	18:40			
18:40		18:40					
21:40		21:40					

W
E
L
C
O
M
E



Eastern Mediterranean University

"Virtue, Knowledge, Advancement"

www.emu.edu.tr

